

*Optimum for border patrol units, port facilities,
coast oil fields, highway monitoring, etc.*

SPECIFICATION

Model Number		TM22Z1022AI	TM22Z1022AIPN
Image Format		1/2inch	
Focal Length		10-220mm	
Maximum Aperture		F2.2-3.5	
Aperture Ratio		F2.2-360	
Back Focal Length		11.00mm	
M.O.D.		1.8m	
Angle of View (θ)=1/3"	Diagonal	W41.99° (32.11°)	T2.17° (1.64°)
	Horizontal	W34.14° (25.90°)	T1.74° (1.31°)
	Vertical	W25.90° (19.53°)	T1.31° (0.99°)
Filter Size		M67mm P=0.75	
Dimensions		W80.0 X H101.0 X L158.7mm	
Weight		800g	
Operating Temperature Range		-10°C~45°C	
Operating Humidity Range		30%~70%	
Mount		C	

AUTO IRIS

Input Voltage	DC+8-16V
Current Consumption	35mA or Less
Input Signal	VS or V Signal
Iris Accuracy	±15% AT Video Signal Level
Sensitivity	0.5~1.0Vp-p AT Video Signal Level
Response Speed	Approx. 1.5 Seconds

FOCUS / ZOOM

Input Voltage	DC+6-12V
Current Consumption	60mA or Less
Motorization Speed	Approx. 4.5 Seconds

CABLE CONNECTION

FOCUS

Cable Color	Polarity	Direction
● Black	+	Inf.
● Red	-	
● Black	-	Near
● Red	+	

ZOOM

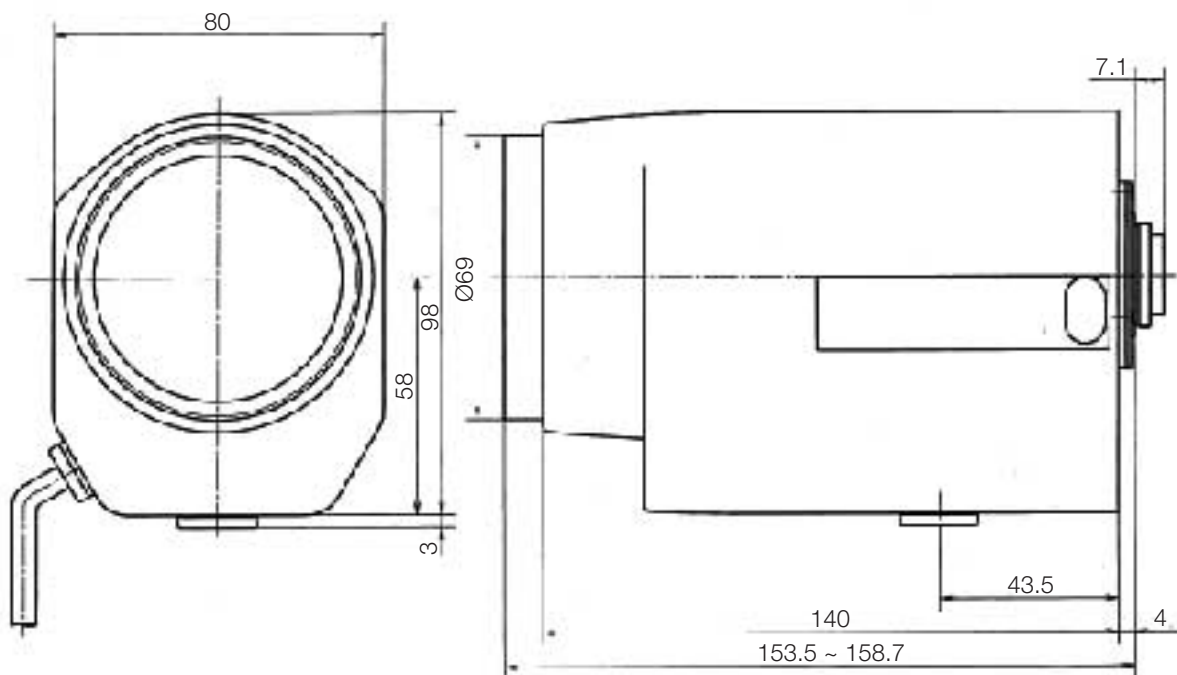
Cable Color	Polarity	Direction
● Green	+	Wide
○ White	-	
● Green	-	Tele
○ White	+	

AUTO IRIS

Cable Color	Connection
● Red	Power (DC8V-16V)
○ White	VS or V Signal
● Green	Level Remote
● Black	GND

POTENTIOMETER-PRESET

Cable Color	Connection
● Orange	POT.SUPPLY
● Gray	ZOOM POT.WIPER
● Purple	POT.RETURN
● Blue	FOCUS POT.WIPER



TOKINA Co.,Ltd. Security Products Division

120-4 NOZUTA-MACHI, MACHIDA-SHI

TOKYO, 195-0063 JAPAN

TEL:+81-42-734-8255 FAX:+81-42-735-1463

E-mail:cctv@tokina.co.jp URL:www.tokinalens.com

